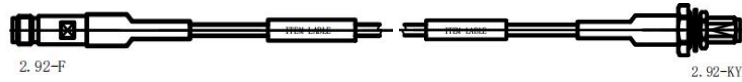
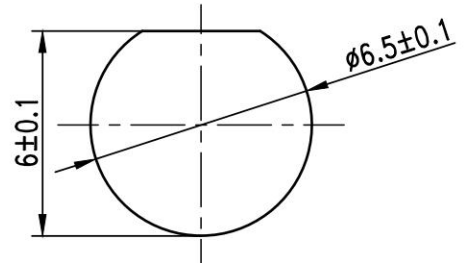


## CA26-2.92-K/KY-E40-XXX



### Configuration

Connector 1	2.92mm Female
Connector 2	2.92mm Female-Y
Connector Body	Stainless Steel Passivation
Connector Conductor	Beryllium Copper, Gold
Insulation	PEI
Cable Type	Internal interconnection Cable
Cable Diameter	4.0mm



### Electrical Specifications

Impedance	50Ω
Frequency Range	DC to 26.5GHz
Insertion Loss	<3.2dB/m,DC-26.5G
VSWR	≤1.30, DC to 26.5GHz
Dielectric withstand Voltage	500 V rms

### Mechanical Properties

Mechanical Life	500 cycles
Bending Radius	40 mm

### Environment Data

Working Temperature	-55°C ~ +125°C
---------------------	----------------

### Order Information

P/N	Product Description
CA26-2.92-K/KY-E40-030	Internal interconnection Cable, 2.92(K) to 2.92(KY),26.5GHz,Length 30cm
CA26-2.92-K/KY-E40-XXX	Internal interconnection Cable, 2.92(K) to 2.92(KY),26.5GHz,Length XXXcm