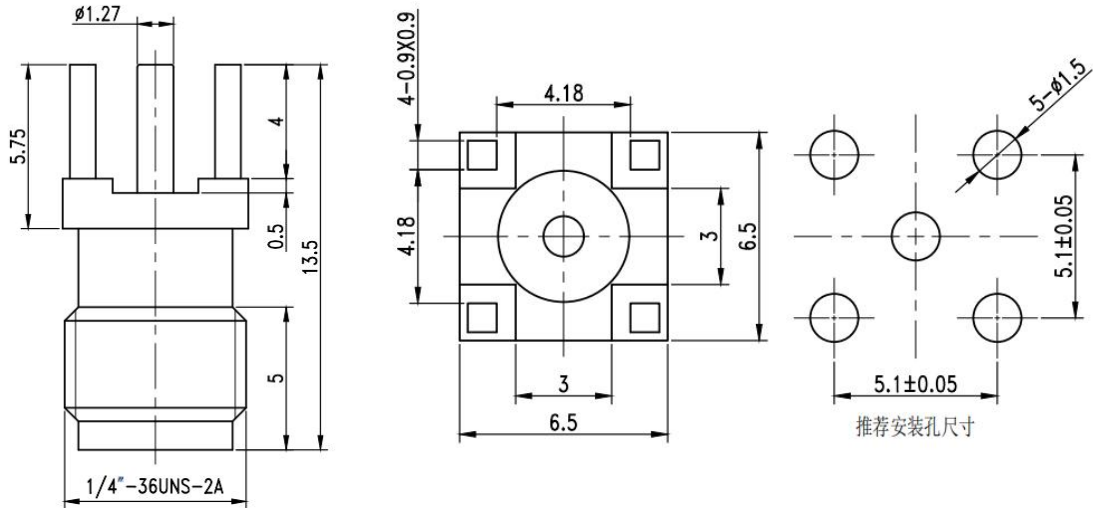


YG-SMA-KHD-16



Configuration	
Connector	SMA Female
Connector Body	Brass Gold Plating
Connector Conductor	Beryllium Copper Gold Plating
Insulation	PTFE
PCB board thickness	NA#
Pin	1.27mm
Electrical Specifications	
Impedance	50 Ω
Frequency Range	DC-18GHz
VSWR	≤ 1.25
Dielectric Withstand Voltage	750Vrms
Environment Data	
Working Temperature	-40 $^{\circ}$ C ~ +165 $^{\circ}$ C